

The movie & series channel

RTL9 was founded in 1955 as the second private broadcaster in Europe. The channel offers successful series such as "Topmodels" (new episodes) and "Stargate SG-1".

RTL9 also broadcasts gripping blockbusters and regularly offers themed evenings for the whole family.

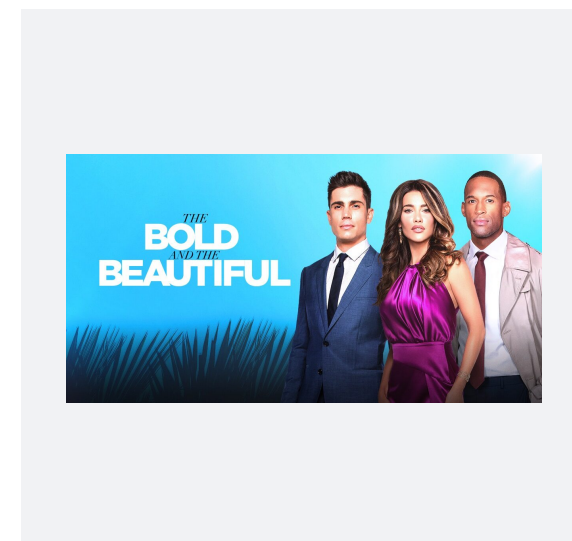
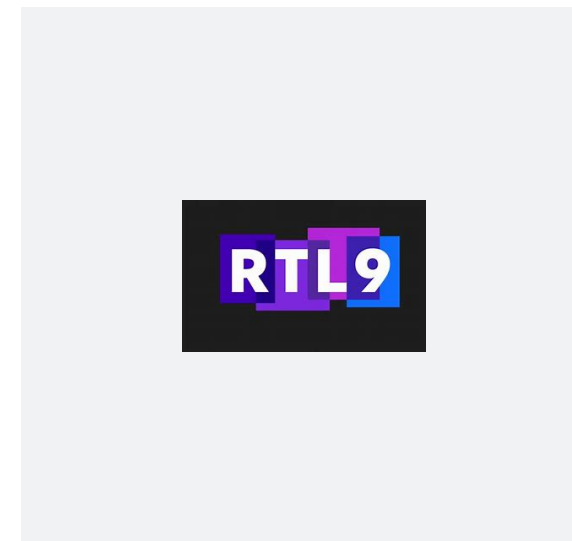
(Age clusters: 3-14; 15-29; 30-39; 40-49; 50-59; 60-69; 70+)

TV

Monthly reach ¹	26,029
----------------------------	--------

Audience Profile

Men	44%
Women	55%
6-15 years	2%
16-24 years	3%
25-34 years	6%
35-44 years	17%
45-54 years	29%
55-64 years	24%
65+ years	19%



¹Mediapulse TV Data (Instar Analytics), 2024. RTL9 is published in Switzerland.